

# SMARTLIFT SL380

Midi



380KG CAPACITY

COMPACT 0.65M

EFFICIENT

ERGONOMIC

MULTI-FUNCTIONAL

TELESCOPIC ARM



**Crane Mate Australia P/L**  
**Walter M Grdovic**  
M: + 61 (0) 417 055 451  
F: +61 (07) 5302 6470  
PO Box 1331, Mooloolaba  
Queensland, Australia 4557  
Dealer Licence No: 3458174  
E-mail: [walter@cranemate.com.au](mailto:walter@cranemate.com.au)  
Web: [www.cranemate.com.au](http://www.cranemate.com.au)



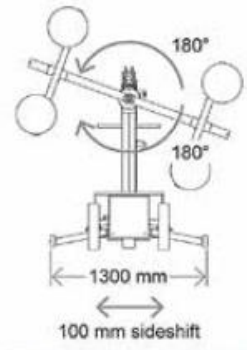
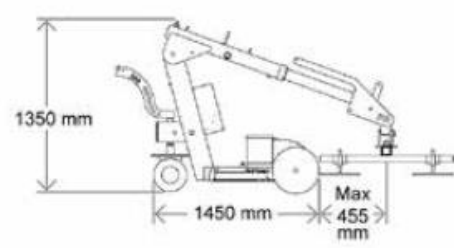
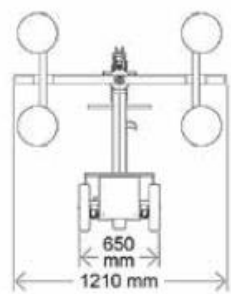
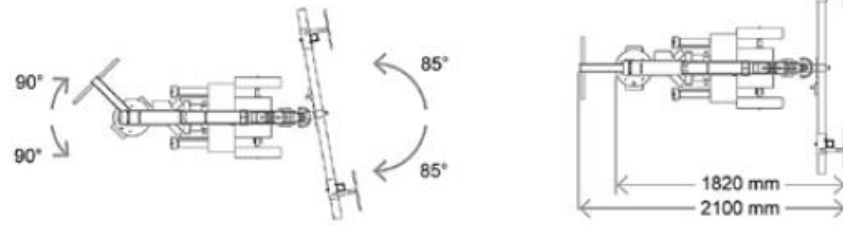
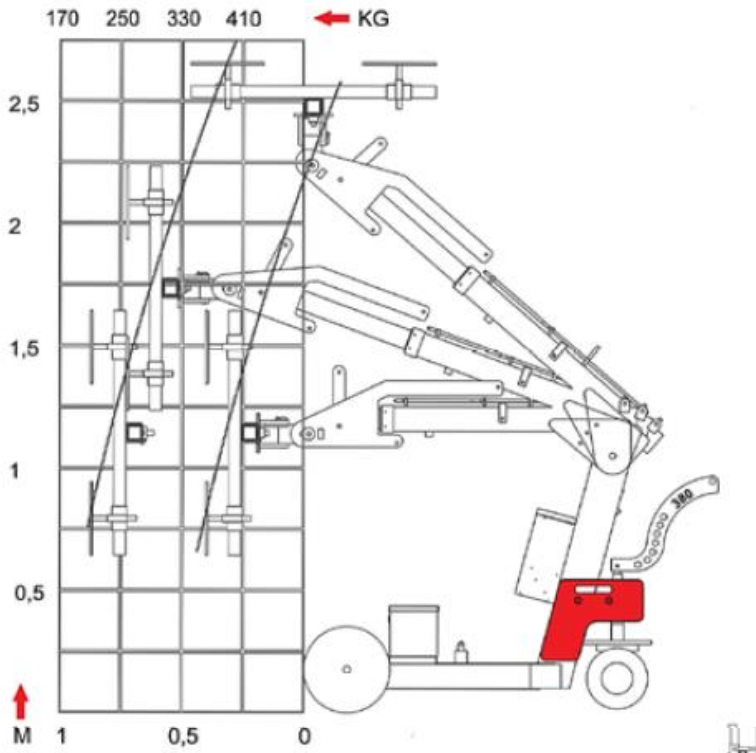
**ZONE SOLUTIONS P/L**  
**Joe Ardizzone**  
M: +61 (0) 408 945 279  
P: +61 (08) 9459 8214  
113 Victoria Rd Kenwick  
Western Australia, 6107  
E-mail: [joe@zonesolutions.com.au](mailto:joe@zonesolutions.com.au)

# SMARTLIFT SL380

Midi



	<b>24V</b>
	<b>570 kg</b>
	<b>Ø300 mm</b>
	<b>Variabel</b>
	<b>380 kg</b>
	<b>50° / 100°</b>
	<b>360°</b>



**Crane Mate Australia P/L**  
**Walter M Grdovic**  
 M: + 61 (0) 417 055 451  
 F: +61 (07) 5302 6470  
 PO Box 1331, Mooloolaba  
 Queensland, Australia 4557  
 Dealer Licence No: 3458174  
 E-mail: [walter@cranemate.com.au](mailto:walter@cranemate.com.au)  
 Web: [www.cranemate.com.au](http://www.cranemate.com.au)



**ZONE SOLUTIONS P/L**  
**Joe Ardizzone**  
 M: +61 (0) 408 945 279  
 P: +61 (08) 9459 8214  
 113 Victoria Rd Kenwick  
 Western Australia, 6107  
 E-mail: [joe@zonesolutions.com.au](mailto:joe@zonesolutions.com.au)